



CATALOG



[GREENTRADEINDIA.COM](https://greentradeindia.com)



ABOUT US

MANUFACTURERS OF BENTONITE & KAOLIN CLAY

Green Trade India is a leading manufacturer and exporter of high-quality Bentonite and Kaolin Clay products. With years of experience in the industry, we have established ourselves as a trusted partner for clients across various sectors.

Our state-of-the-art manufacturing facility in Gujarat enables us to produce premium quality minerals that meet international standards. All our products undergo rigorous quality checks in certified laboratories to ensure consistency and reliability.

We take pride in our customer-centric approach, offering customizable quantities and seamless export solutions to clients worldwide. Our dedicated team works closely with each client to understand their specific requirements and deliver products that exceed expectations.



Mission

An outline of our firm

To become the preferred global partner for high-quality Bentonite and Kaolin Clay products by delivering exceptional value through consistent quality, reliable supply, and outstanding customer service.

To be recognized as a world-class manufacturer and exporter of industrial minerals, driving sustainable growth while maintaining the highest standards of quality and environmental responsibility.

An outline of our firm

Vision

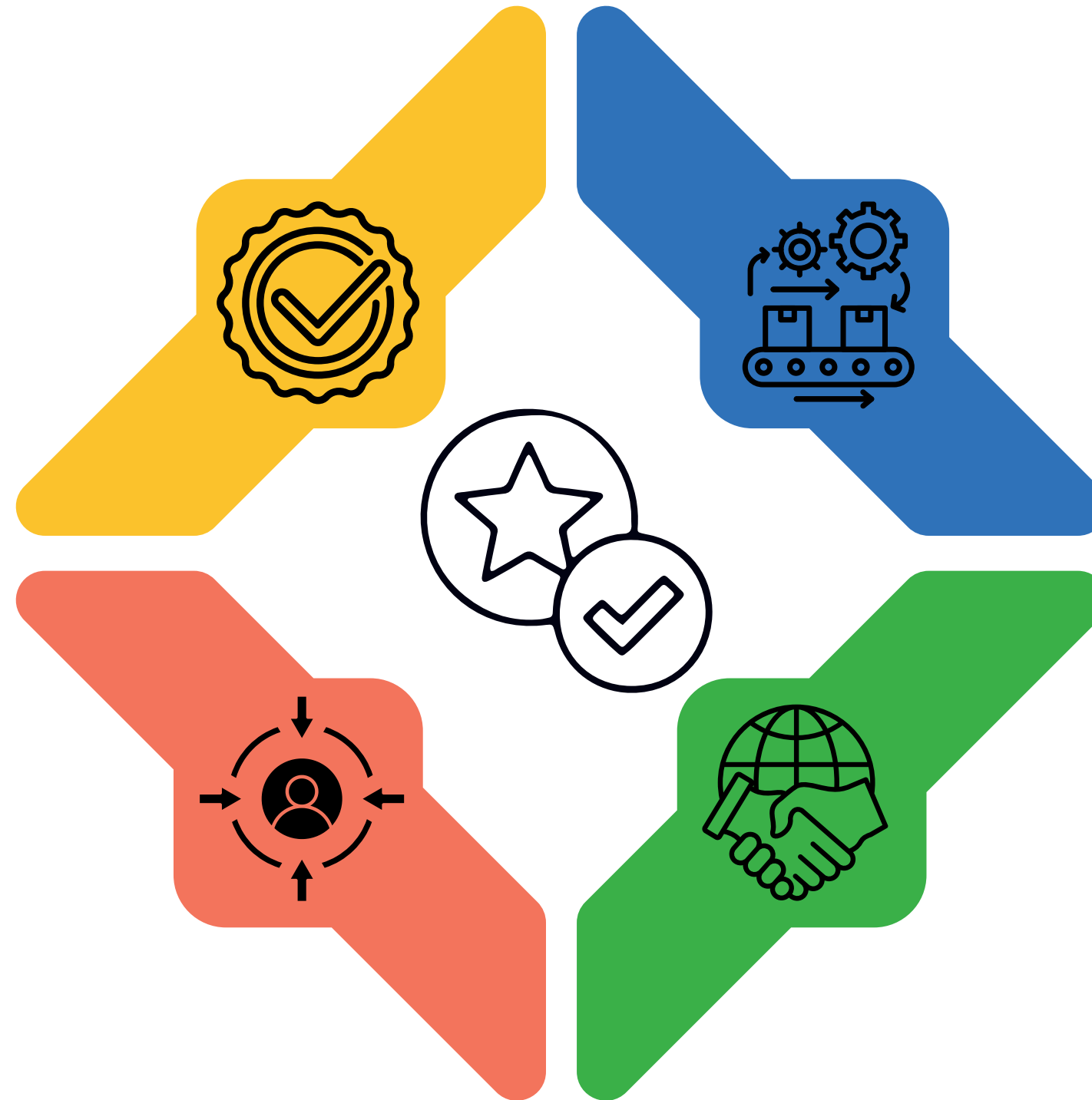
CERTIFICATES



CORE VALUES

Quality Without Compromise

We are committed to delivering bentonite and kaolin clay of consistent, superior quality. Every product is tested in certified laboratories to meet international standards and ensure reliability.



Manufacturing Excellence

With a state-of-the-art facility in Gujarat, we combine advanced processes, skilled expertise, and strict quality control to produce premium-grade minerals.

Customer-Centric Approach

Our clients are at the heart of everything we do. We offer customizable quantities, tailored solutions, and dedicated support to meet specific industry requirements.

Global Responsibility

As a manufacturer and exporter, we adhere to international regulations and best practices, ensuring smooth, reliable, and compliant export solutions.

QUALITY PILLARS

► SGS CERTIFIED

All our products are SGS certified, tested in accredited laboratories, ensuring consistent quality, purity, & compliance with international standards.



CUSTOMIZED PACKAGING ◀

We offer flexible and customized packaging solutions tailored to client requirements, ensuring product safety, convenience, and efficient handling.

► ENVIRONMENT SAFETY

We follow responsible sourcing and eco-conscious manufacturing practices to minimize environmental impact while maintaining sustainable operations.



SCALABLE SUPPLY CAPACITY ◀

With robust production capacity and streamlined logistics, we efficiently fulfill bulk quantity requirements while ensuring timely and reliable delivery.

OUR PRODUCTS



KAOLIN CLAY POWDER

SPECIFICATION

Moisture Content	max 12%
pH Value	8.5- 10.5
Mesh Size	200-300



KAOLIN CLAY NOODLES

SPECIFICATION

Mesh Size	300 - 1250
Whiteness85	92%
ResidueMax	0.5%



KAOLIN CLAY LUMPS

SPECIFICATION

Brightness	80 - 86%
Particle Size	80% < 2µm
MoistureMax	1.5%

PRODUCTION CAPACITY

SUPPORTS HIGH MONTHLY OUTPUT FOR A WIDE RANGE OF PRODUCTS.

**3000 MT
LEVIGATED WASH**



**4000 MT
CALCINED KAOLIN**



**5000 MT
HYDROUS**



KAOLIN CLAY POWDER



KEY FEATURES

- High-purity
- Fine particle kaolin
- Superior Whiteness
- Stable low-impurity composition
- SGS certified quality
- Multi-industry application

SPECIFICATION

Moisture Content	max 12%
pH Value	8.5- 10.5
Mesh Size	200-300

PACKING OPTIONS

- HDPE BAG 25 KG
- PP BAG 50 KG
- JUMBO BAG 1 TON

KAOLIN CLAY LUMPS



KEY FEATURES

- Uniform shape
- Low impurities
- Controlled moisture
- SGS Certified
- Suitable for multiple industries.

SPECIFICATION

Brightness	80 - 86%
Particle Size	80% < 2 μ m
Moisture	Max 1.5%

PACKING OPTIONS

- HDPE BAG 25 KG
- PP BAG 50 KG
- JUMBO BAG 1 TON

KAOLIN CLAY NOODLES



KEY FEATURES

- Consistent form
- Minimal impurities
- Balanced moisture content
- SGS-approved quality
- Wide industrial applicability.

SPECIFICATION

Mesh Size	300 - 1250
Whiteness	85 92%
Residue	Max 0.5%

PACKING OPTIONS

- HDPE BAG 25 KG
- PP BAG 50 KG
- JUMBO BAG 1 TON



INDUSTRIAL APPLICATION

Our products are used across various industries for multiple applications



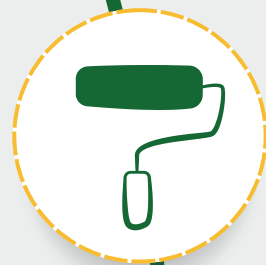
Foundry

Bentonite is used as a binding agent in foundry sands for metal casting.



Drilling Fluids

Bentonite serves as a viscosifier in drilling muds for oil and gas wells.



Paints & Coatings

Kaolin is used as an extender and opacifier in paint formulations.



Paper Industry

Kaolin clay is used as a filler and coating pigment in paper manufacturing.



Pharmaceuticals

Both Bentonite and Kaolin are used in pharmaceutical preparations.



Environmental

Bentonite is used in environmental applications for sealing and containment.

TESTING PARAMETERS

Quality Compliances

Product Specific,

Purity & Consistency

Chemical Analysis

Physical Properties



TEST REPORTS

Quality Services & Solutions (QSS)

Plot No 74, Sector -11, GIDC, Heavy Industrial Area,
B/h Bhagwati Weighbridge
Gandhidham - Kutch 370201.
Tel: +91- 2836-236372 / 236373 / 235869
E mail: uday_padhye@qssindia.com

TEST REPORT

REPORT NO. QSS/GDM/LAB/2018-19/07937

Date of Issue : 10-Dec-2018

Page 1 of 1

SAMPLE NOT DRAWN BY THE LABORATORY

SAMPLE DETAILS [as declared by Customer] :

SAMPLE DESCRIBED AS : KAOLIN
SUBMITTED BY : M/s. NEESHLOK IMPEX
Ward 7/C Plot No. 9, Sindhubaugh Road, Nr. Kidzee School, Gandhidham - Kutch. 370201
CONTACT PERSON NAME : A. J. VORA, Cont. No. 9638699059
CONTACT NO. : +91-9638699059/966222379
MARKS ON LETTER/SAMPLE : NIL
SAMPLE/S RECEIVED ON : 30-Nov-2018
SAMPLE/S LETTER REFERENCE : Letter Dtd. 29.11.2018
CONDITION OF SAMPLE/S : Unsealed
JOB REF. NO. : S.11.216
QUANTITY OF SAMPLE/S RECD. : 300 Gms
E - 07778

Sl. No.	Parameters	Unit	Result Obtained	Protocol
1	Alumina as Al ₂ O ₃	%	37.78	IS:2840:2002
2	Iron as Fe ₂ O ₃	%	0.69	IS:2840:2002
3	Titania as TiO ₂	%	1.88	IS:2840:2002
4	CaO+MgO	%	0.24	IS:5949:1990
5	Na ₂ O+K ₂ O	%	0.27	IS:9497:1980
6	Moisture	%	0.53	IS:505:1995
7	Green M.O.R.	kg/cm ²	4.7	By MOR Appratus
8	Dried M.O.R.	Kg/cm ²	8.9	By MOR Appratus

Results on Dry Basis, Sr. (6) on As Received Basis, Sr. (7) & (8) Subcontract to Other Laboratory

**** End of the Test Report ****

Prepared By

For Quality Services & Solutions (QSS)

(Authorised Signatory)
Chetan Shiyalwala
Laboratory Manager

1) The result are related to the sample/s tested only.
2) Remaining portion of sample after testing (if any) will be retained for max. 60 days only.
3) Contents of this report are meant for your guidance & should not be used for advertisement, evidence or litigation.
4) This Test Report shall not be reproduced except in full, without the written approval of Quality Service & Solutions (QSS).
5) Total liability of our Institution is limited to the Invoice Amount / Testing Charges.

All businesses are undertaken subject to the Company's Standard General Business Conditions which are available on request.

Group Corporate Office: 67-68-68A, Bhavani Complex, 1st Floor, Office No.106, Sector No.19A, Near Green Park Hotel, Opp. Danabunder, Vashi, Navi Mumbai 400 705, India
Tel: (022) 27842890, 27836120 • e-mail: qss_corp@qssindia.com • Website: www.qssindia.com

ISO 9001:2015 CERTIFIED COMPANY

MICRO TECH
Ceramic Lab

Office No. : +91 99046 62829

Date: 06/10/2018

NAME OF PARTY	NEESHLOK IMPEX
SAMPLE NAME & CODE	MR. AALOK VORA WASHED KAOLIN
TEST REQUIREMENT	PHYSICAL & CHEMICAL ANALYSIS
REFERENCE NO.	090/LB18/09
DATE OF RECEIVED	04/10/2018

Test Report

Physical Properties

Name of test	Result
Shrinkage %	3.11
Loss On Ignition %	9.26
Dry M.O.R kg/cm ²	22.2
Fired M.O.R kg/cm ²	127.3
Water Absorption %	16.82
Water Of Plasticity %	28.4
T.D.S	307
Residue(240 # %2 minute grinding)	1.71
L*	90.33
a*	1.15
b*	8.54
Whiteness	77.06
Temperature C	1196/1206
Cycle Min.	65

Chemical Analysis

Compound	Result %
SiO ₂ %	63.85
Al ₂ O ₃ %	23.42
Fe ₂ O ₃ %	0.66
TiO ₂ %	1.17
CaO %	0.31
MgO %	0.62
K ₂ O %	0.52
Na ₂ O %	0.23
Loss on Ignition %	9.05

For, MICRO TECH LAB.

At. Lalpar, Behind Gopal Hardware, 8-A, N. H., MORBI - 2.
 E-mail : microtech.ceramiclab@gmail.com

Mo. +91 73598 62829
 Mo. +91 97234 55373
 Mo. +91 94261 59188



EXTRACTION



SEPRATION



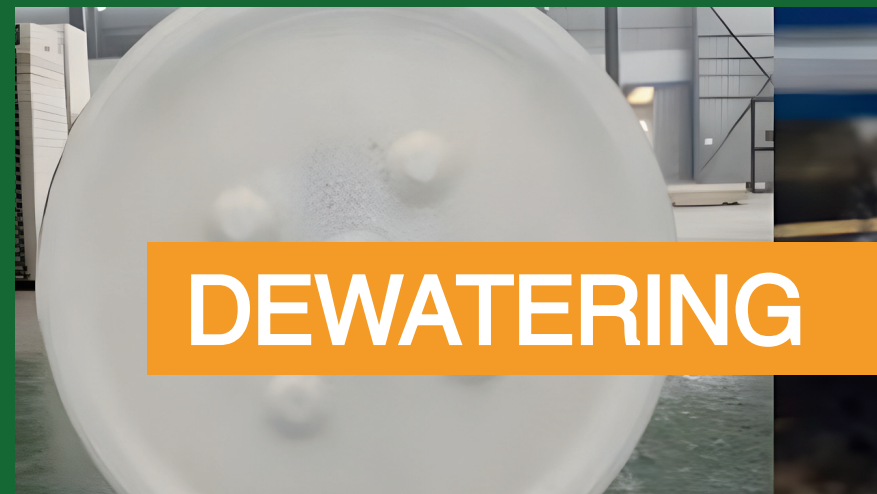
DRYING



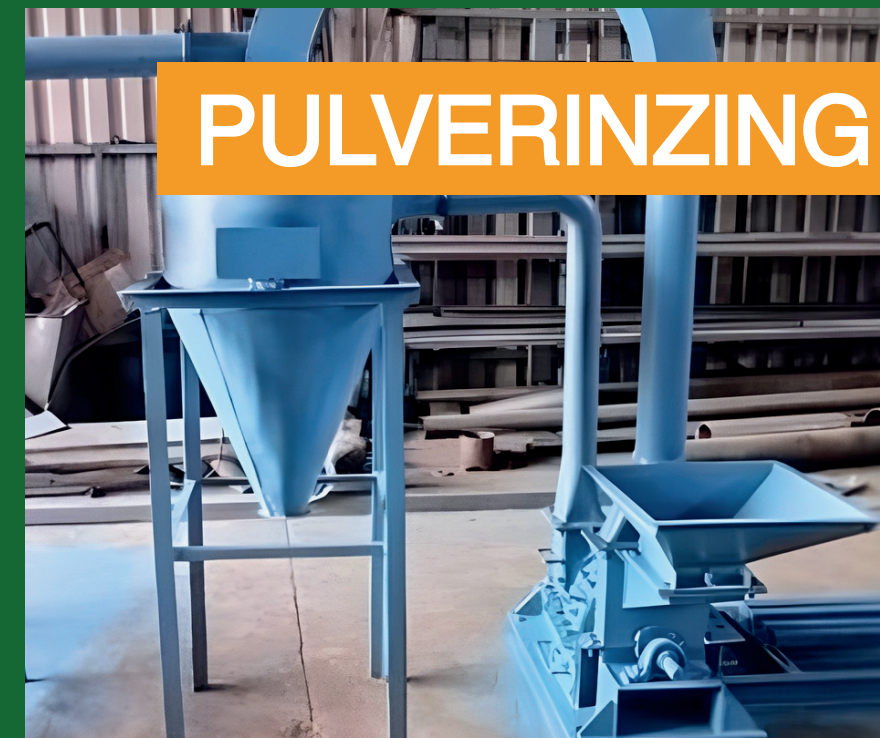
QUALITY
CHECK



CRUSHING



DEWATERING



PULVERINZING



PACKING

INSIDE OUR PRODUCTION PROCESS

EXPORT READY SOLUTIONS

WE PROVIDE SEAMLESS EXPORT SOLUTIONS
FOR GLOBAL CLIENTS

Global Shipping

We export to various countries with reliable shipping partners.



Product Quality Different

We handle all export documentation and customs clearance.

Custom Packaging

We offer packaging options tailored to your requirements.



Quality Certificates

All shipments include necessary quality certificates.



PACKING



LOADING



STOCK



TRANSFER



PORT

TTNU 340099 2
22G1

MAXGROSS	30.480	KGS
TARE	67.200	LBS
PAYLOAD	2.230	KGS
CUB.CAP	4.920	LBS
	28.250	KGS
	62.280	LBS
	33.2	CU M
	1.170	CU FT

EXPORT SHIPMENT

WHY CHOOSE US?

WE STAND OUT IN THE INDUSTRY
FOR SEVERAL **KEY REASONS**



QUALITY ASSURANCE

All our products are verified by certified laboratories to ensure they meet the highest quality standards.



EXPORT READY

We have extensive experience in international exports with safe and secure shipping solutions.



CUSTOMER SUPPORT

Our dedicated support team is always available to assist with your requirements and queries.



CUSTOMIZABLE SOLUTIONS

We offer flexible packaging and quantity options tailored to your specific needs.

FREQUENTLY ASKED QUESTIONS

What's the MOQ? Accept small trial orders?

MOQ 1 ton for regular items. Smaller trial batches available for new clients; negotiable based on product type & shipping cost. Same quality process as bulk orders.

Lead time after order placement?

In-stock regular items ship in 3-5 working days post-payment. 7-15 working days for custom/large orders. Production updates provided for on-time delivery.

Factory or trading company? Any price and quality advantages?

We're an integrated manufacturer & trader, the largest non-metallic mineral producer in Northern China, with professional foreign trade services. Competitive pricing (no middlemen vs pure traders); full production control with batch inspection records for stable supply.

What's the MOQ? Accept small trial orders?

MOQ 1 ton for regular items. Smaller trial batches available for new clients; negotiable based on product type & shipping cost. Same quality process as bulk orders.

Can product parameters be adjusted later?

Yes. In-house R&D team & lab support flexible process tweaks. Confirm purity/particle size adjustments with our sales rep in advance; sample approval before bulk production.

CONTACT

GREEN TRADE INDIA



+91 8460592889



info@greentradeindia.com



Plot 113, Ward 10 A, Opp IFFCO MAIN Gate,
Gandhidham, Kutch Gujarat 370201

WWW.GREENTRADEINDIA.COM



Designed by: @selcouth_by_sonali

